



STANDARD VERSIONS OF 5.5t CAPACITY AXLES AND SUSPENSIONS

other versions are available on request

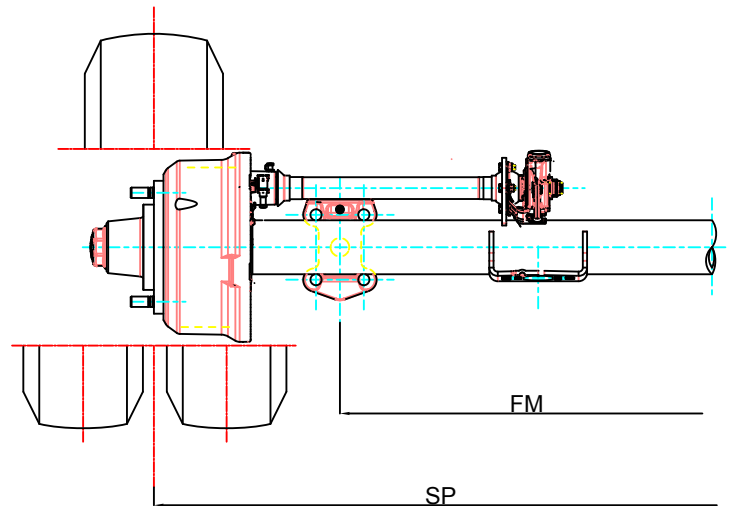
Brake Type	Wheel size and Type	Axle Type	Track width SP (mm)	Spring centres FM (mm)	Ride height range FH (mm)	Typical tyre used
SB3308 Disc Brake	For 17.5" & 19.5" Single centre nave wheels 6 off M18 studs on 205 pcd	SNRS 5506	2200	1500	SLU Underslung from 215 to 320	235/75 R17.5 265/70 R19.5
			1900	1200	SLO Overslung from 365 to 480	
SN3010 Drum Brake	For 17.5" & 19.5" Single centre nave wheels 6 off M18 studs on 205 pcd	NRS 5506	2200	1500	SLU Underslung from 170 to 320	235/75 R17.5 245/70 R19.5
			1900	1200	SLO Overslung from 365 to 480	
SN3010 Drum Brake	For 15" & 17.5" Twin standard offset wheels 6 off M18 studs on 205 pcd	NRZ 5506	1920	1200	SLU Underslung from 170 to 320	205/70 R15 205/80 R15 205/65 R17.5
			1720	1000	SLO Overslung from 365 to 480	
SB3308 Disc Brake	For 17.5" Twin standard offset wheels 6 off M18 studs on 205 pcd	SNRZ 5506	1920	1200	*SLO Underslung only from 365 to 480	205/65 R17.5 215/75 R17.5
			1720	1000		
SN4212 Drum Brake	For 19.5" to 22.5" Single centre nave wheels 8 off M22 studs on 275 pcd	RSF 5508 Maxx	2100	1400	SLU Underslung from 170 to 320	265/70 R19.5 275/70 R22.5
			1900	1200	SLO Overslung from 365 to 480	

* NO TWIN WHEELS FOR UNDERSLUNG SUSPENSION WITH DISC BRAKE AXLES IN PROGRAM.

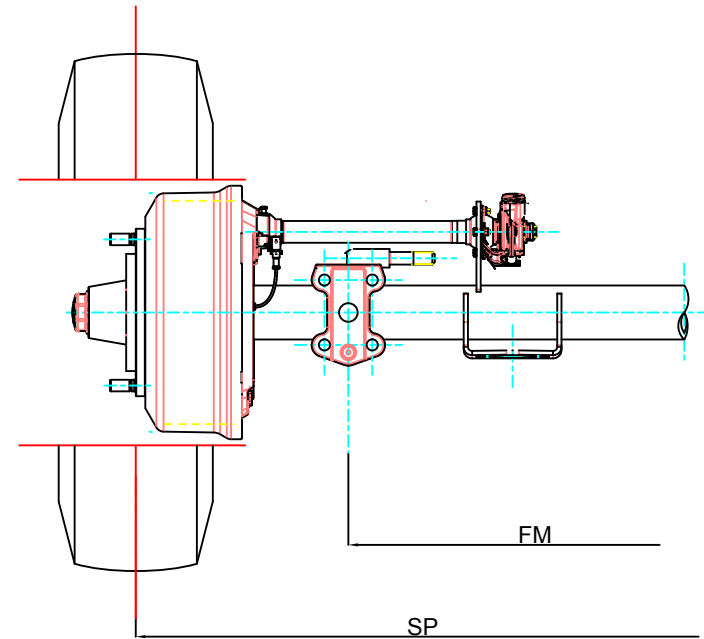
TECHNICAL DATA - 5.5T CAPACITY AXLES



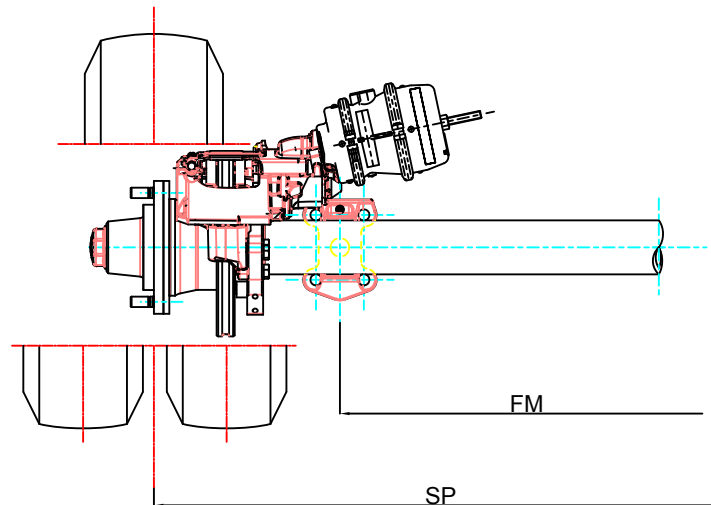
NRS 5506 & NRZ 5506



RSF 5508



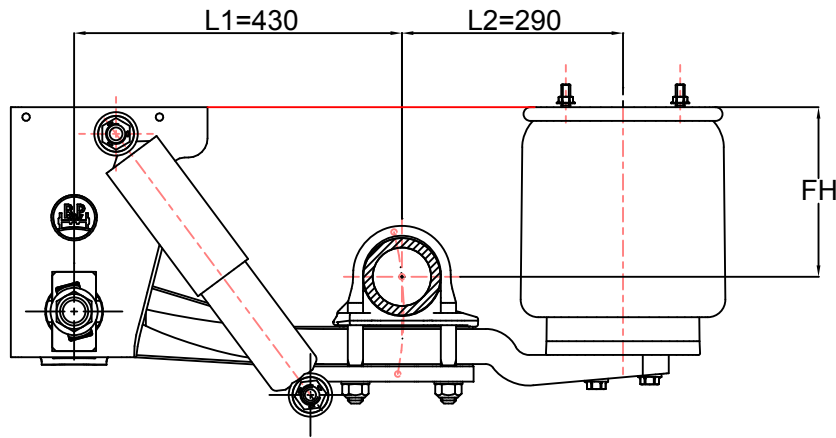
SNRS 5506 & SNRZ 5506



TECHNICAL DATA - 5.5T CAPACITY SUSPENSIONS



SLU Single Leaf Underslung Suspension



SLO Single Leaf Overslung Suspension

